

The flood map for the selected area is number **23019C1620D**, effective on **7/19/2023**

DYNAMIC MAP



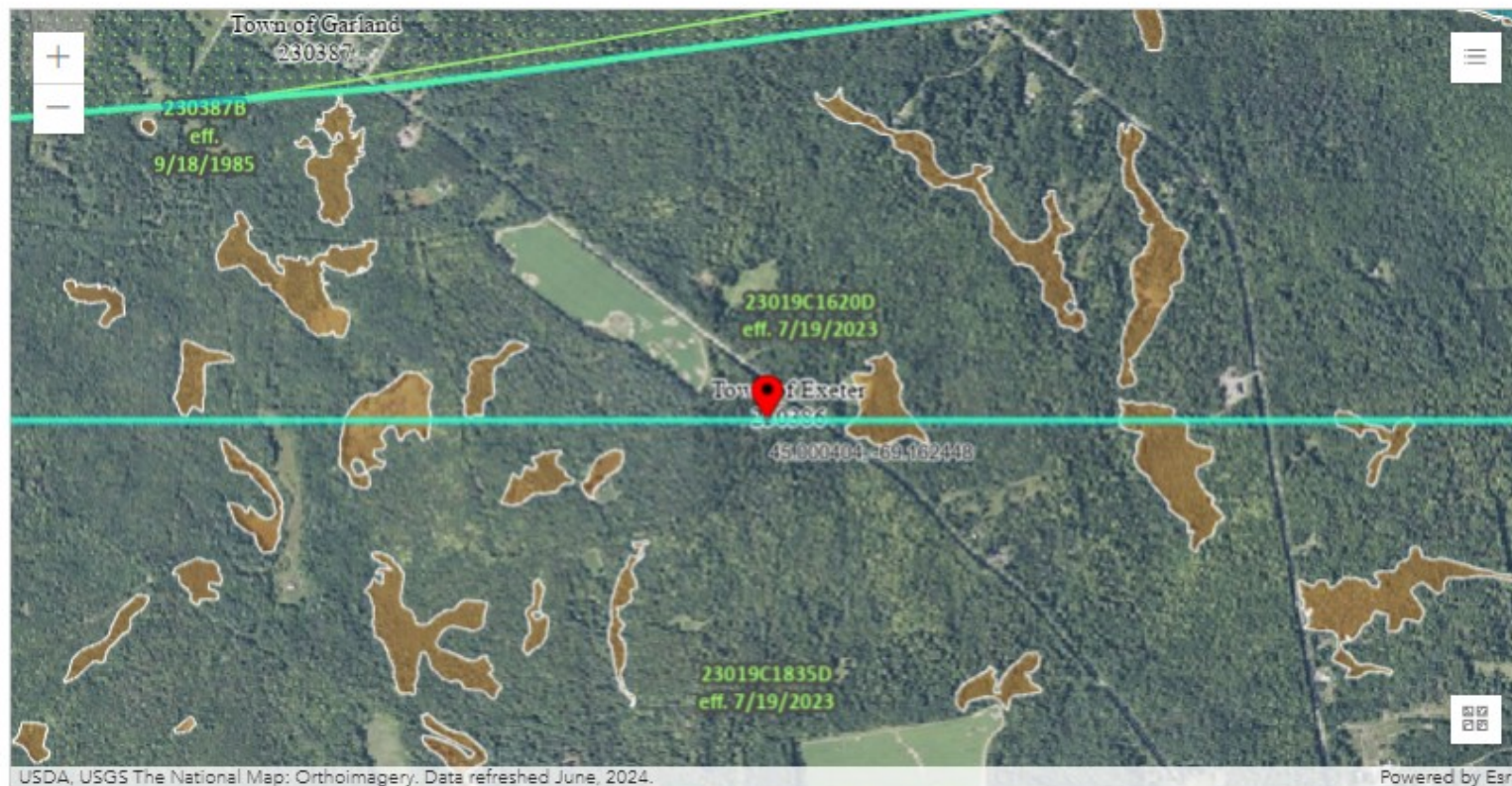
MAP IMAGE



Changes to this FIRM ?

- Revisions (0)
- Amendments (0)
- Revalidations (0)

You can choose a new flood map or move the location pin by selecting a different location on the locator map below or by entering a new location in the search field above. [Go To NFHL Viewer »](#)
It may take a minute or more during peak hours to generate a dynamic FIRMette.



Initial Initial Initial
AMH USA BR